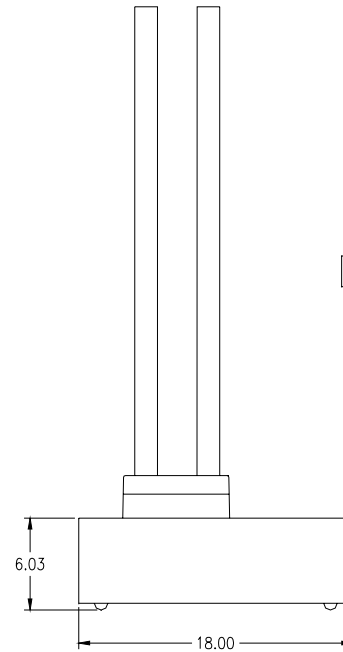
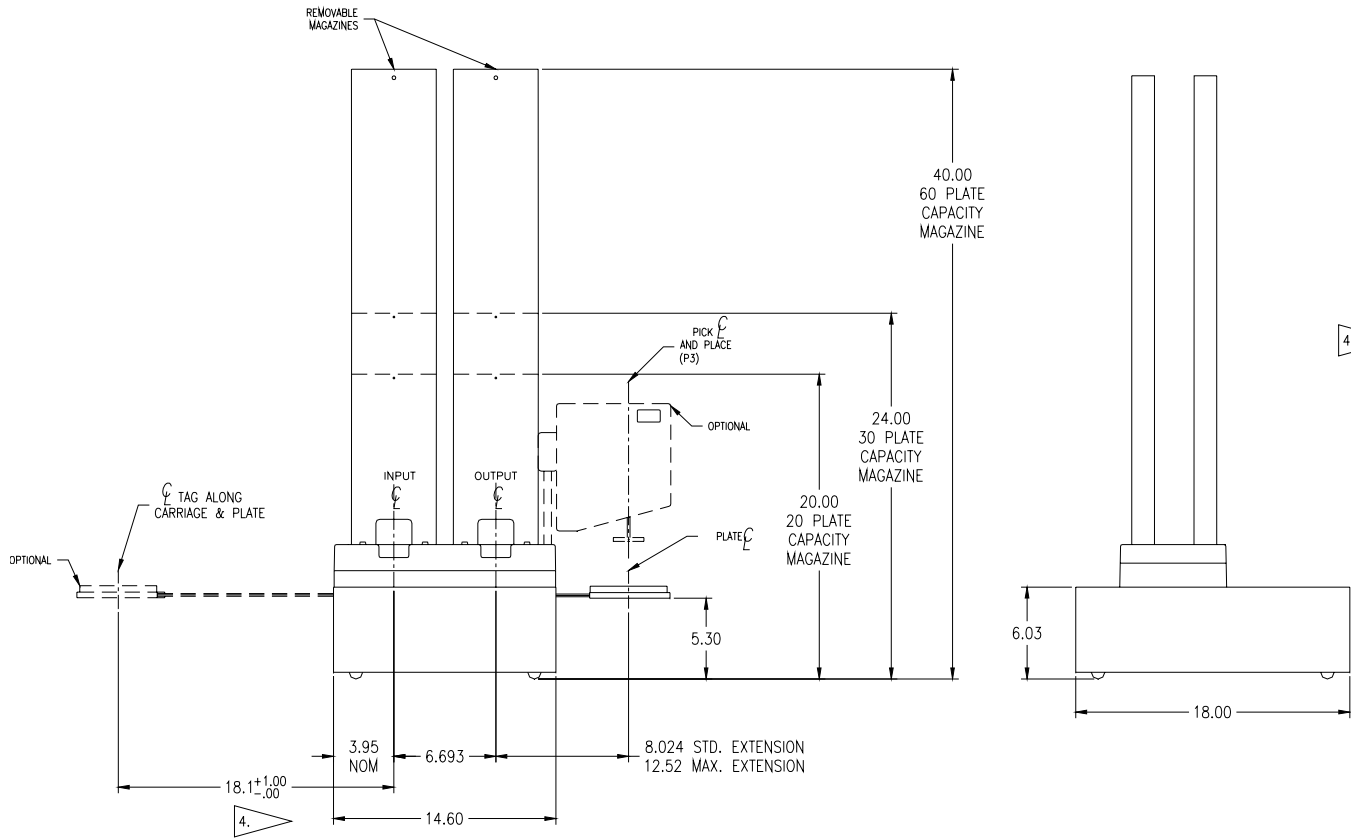


# Specifications – Titan 60 Stacker

<b>Weight:</b>	50 lbs.	23 kg
<b>Models:</b>	Standard Deep Well	Deep Well model will process both standard & deep well plates
<b>Dimensions:</b>	<b>Standard Model</b>	
	<b>Width</b> - 14.6 inches	37 cm
	<b>Depth</b> - 18 inches	46 cm
<i>S20 magazine installed</i>	<b>Height</b> - 20 inches	51 cm
<i>S30 magazine installed</i>	<b>Height</b> - 24 inches	61 cm
<i>S60 magazine installed</i>	<b>Height</b> - 40 inches	102 cm
	<b>Deep Well Model</b>	
	<b>Width</b> - 14.6 inches	37 cm
	<b>Depth</b> - 18 inches	46 cm
<i>S20 magazine installed</i>	<b>Height</b> - 21.25 inches	54 cm
<i>S30 magazine installed</i>	<b>Height</b> - 25.25 inches	64 cm
<i>S60 magazine installed</i>	<b>Height</b> - 41.25 inches	105 cm
<b>Electrical:</b>		
Mains Voltage	115 volt $\pm$ 10 %, 60 Hz 30VA	230 volt $\pm$ 10 %, 50 Hz 30VA
Mains Fuse	3 amp for 115 volt	1.5 amp for 230 volt
<b>Plate Transport:</b>	Direct drive step motor with a positional resolution of 0.010 inch.	Plate reach up to 14 inches
<b>Interface:</b>	RS232 using simple command set.	
<b>Throughput:</b>	7 seconds to deliver or retrieve a plate	
<b>Magazines:</b>	20, 30 or 60 standard plate capacity	60 plate magazine will hold 18 deep well plates
<b>Options:</b>		
Titertek P3 Device Standard Extension	Standard Extension is 8.024 inches	
Titertek P3 Device Maximum Extension Right Hand Presentation	Maximum Extension range is 10.67 to 12.52 inches Presents plate to the right	
Tag-Along Carriage	Presents plate to the right Presents plate to the left	See note 4 on Figure 1 See note 4 on Figure 2
Plate Lock Device for standard plates	The Plate Lock is used to separate plates that have a tendency to stick together due to vapor lock or plate sealing adhesives	





## NOTES:

1. ADD 1.25" TO HEIGHT OF DEEP WELL MODEL  
REMAINDER OF DIMENSIONS THE SAME.  
(DEEP WELL MODEL RUNS STANDARD AND DEE  
WELL PLATES)
2. STACKERS (P/N 52154) WITHOUT THE PICK  
AND PLACE (P3) PRESENTS THE PLATE TO  
THE RIGHT IN .00852 INCH INCREMENTS UP  
TO 12.52 INCHES MAXIMUM.
3. PICK AND PLACE (P3) OPTION AVAILABLE  
WITH STANDARD EXTENSION (8.024) P/N  
52156 SHOWN, OR WITH AN EXTENSION  
RANGE OF 10.67 TO 12.52 INCHES P/N  
52155.
4. AN OPTIONAL TAG ALONG CARRIAGE CAN  
PRESENT A PLATE 18.1 ± 1.00 TO THE  
LEFT AND THEN BACK TO  $\phi$  OF INPUT.  
THIS REQUIRES A RIGHT EXTENSION OF  
12.52 AS SHOWN.

**Figure 2 Titan Stacker - Right Hand Presentation**